

# SPECIALIZED, COMPASSIONATE CARE FOR OVER A DECADE



MEN



WOMEN



ADOLESCENTS

## Medicare/Medicaid Facilities

Rosewood Centers for Eating Disorders understands how painful and devastating life with an eating disorder can be, and we would like to help every person in need get the care they seek. With this in mind we have created this list of facilities that are known to have accepted medicaid or medicare. Though we can not guarantee that these facilities will continue to accept medicare or medicaid, we do hope you find this information useful.

Rosewood also offers private pay options, and can work with people on a financial plan that makes treatment attainable. *Please call 800.845.2211 to learn about these options*

### **Emily Program, WA, [EmilyProgram.com](http://EmilyProgram.com), 509.252-1366:**

- Outpatient facility in Seattle Medicare only. A full intake has to be located in their office.
- In Minnesota they offer inpatient treatment, partial hospitalization program and outpatient treatment with lodging available. Medicare does not pay for lodging for the partial hospitalization and outpatient services.

### **Rogers Memorial Hospital, WI, [RogersHospital.org](http://RogersHospital.org), 800.767.4411**

- Accepts Medicare only. Inpatient with short term stay, which depends on severity. Assessment can be completed over the phone. There is 24 hour nursing and a doctor is located on the hospital grounds.

### **Illinois Institute/Peoria, IL , [AddictionRecov.org](http://AddictionRecov.org), 800.522.3784**

- Treats food as an addiction. The assessment for this facility must be done in person.



**ROSEWOOD®**  
CENTERS FOR EATING DISORDERS

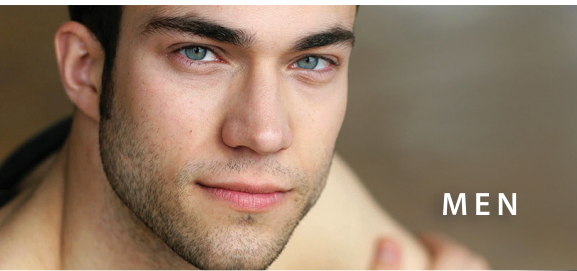
**f** /RosewoodRanchCenters

**@RosewoodCenters**

**P** 24/7 Intake 800.845.2211

**W** [RosewoodRanch.com](http://RosewoodRanch.com)

# SPECIALIZED, COMPASSIONATE CARE FOR OVER A DECADE



MEN



WOMEN



ADOLESCENTS

## Medicare/Medicaid Facilities

### **River Oaks/ Louisiana, LA, [RiverOaksHospital.com](http://RiverOaksHospital.com), 800.336.1740**

- This is an acute inpatient facility. The assessment is a form that would need to be completed and faxed back to them.

### **Two Rivers/ Kansas City, MO, [TwoRiversHospital.com](http://TwoRiversHospital.com), 816.382.6300**

- Not a specific treatment facility for eating disorders. Will indirectly treat eating disorders while treating other mental health concerns.

### **University of Iowa, IA, [UIHealthCare.org](http://UIHealthCare.org), 319.356.2263**

- Facility is an inpatient facility that accepts Medicaid. This is a step down program from inpatient, to partial inpatient.

### **Center for Change, UT, [CenterforChange.com](http://CenterforChange.com), 888.224.8250**

- This facility accepts Medicaid.

### **Rader Program, CA, [RaderPrograms.com](http://RaderPrograms.com), 800.841.1515**

- California facility does not take Medicare at this time  
- Oklahoma program 800.342.5597 takes Medicare. Assessment is done over the phone. 21 day inpatient treatment. Medical doctor is present during business hours and a 24 hr. nursing staff is available. Patient has to be medically stable.



**ROSEWOOD®**  
CENTERS FOR EATING DISORDERS

**f** /RosewoodRanchCenters

**t** @RosewoodCenters

**P** 24/7 Intake 800.845.2211

**W** [RosewoodRanch.com](http://RosewoodRanch.com)

# SPECIALIZED, COMPASSIONATE CARE FOR OVER A DECADE



## Medicare/Medicaid Facilities

**Mercy Ministries of America/ Nashville, TN, [MercyMinistries.org](http://MercyMinistries.org), 615.831.6987**

- According to its website this facility only treats young women age 13 to 28.

**Johns Hopkins, MD, [HopkinsMedicine.org](http://HopkinsMedicine.org), 410.502.5467**

- This facility is a psychiatric facility that accepts Medicare. This facility has inpatient treatment that then step down to partial inpatient.

- For the assessment the clinician has to contact the above number and then fax over the requested information in order to complete the initial assessment.

**Sheppard Pratt, Center for Eating Disorders, MD, [SheppardPratt.org](http://SheppardPratt.org), 410.938.5252**

- This facility accepts Medicare. This is a 10-14 day inpatient treatment facility with a 2-3 week 12 hour a day outpatient component. There may be some group home housing available or low cost rent at a hotel.

**Alexian Brothers, (IL), [AlexianBrothersHealth.org](http://AlexianBrothersHealth.org) 800.432.5005**

- This facility offers inpatient, partial inpatient and outpatient treatment. This facility accepts Medicare.

- This facility typically has a patient inpatient 7-10 days for stabilization.



**ROSEWOOD®**  
CENTERS FOR EATING DISORDERS

**f** /RosewoodRanchCenters

**t** @RosewoodCenters

**P** 24/7 Intake 800.845.2211

**W** [RosewoodRanch.com](http://RosewoodRanch.com)

# SPECIALIZED, COMPASSIONATE CARE FOR OVER A DECADE



MEN



WOMEN



ADOLESCENTS

## Medicare/Medicaid Facilities

**UCLA, CA, [EatingDisorders.UCLA.edu](http://EatingDisorders.UCLA.edu), 310.206.4376**

- This is an inpatient facility. Medicare pays 80% of the fee .

**Princeton Medical Center, [PrincetonHCS.org](http://PrincetonHCS.org) (NJ) 877.932.8935**

- This facility accepts Medicaid. This is an inpatient facility that consists of 3, 4, or 5 weeks of treatment. The complete an assessment the patient's psychological evaluation, current physical, most recent blood work, and the patient's height and weight must be faxed.

**Sanford Health, Fargo, ND, [SanfordHealth.org](http://SanfordHealth.org), 701.461.5300**

- This facility does not accept Medicare from out of state. This facility is inpatient and partial hospitalization. There is no housing so when in partial treatment most individuals stay in a hotel. Assessments can be done over the phone.

**Del Amo Hospital, Torrance, CA, [DelAmoHospital.com](http://DelAmoHospital.com), 800.533.5266**

- This facility accepts Medicare. This program is a two to four week program that is based on CBT. Assessments are completed over the phone and take at least thirty minutes. This is an inpatient facility.



**ROSEWOOD®**  
CENTERS FOR EATING DISORDERS

**f** /RosewoodRanchCenters

**t** @RosewoodCenters

**P** 24/7 Intake 800.845.2211

**W** [RosewoodRanch.com](http://RosewoodRanch.com)